

# Studio n° 1

Marco De Biasi

♩ = 108

*mf*

1 2 3 4

5 6 7 8 9 10 11 12 13 14 15 16

17 18 19 20 21 22 23 24 25 26 27 28 29 30 31 32 33 34 35 36 37 38 39 40 41 42 43 44 45 46 47 48 49 50 51 52 53 54 55 56 57 58 59 60 61 62 63 64 65 66 67 68 69 70 71 72 73 74 75 76 77 78 79 80 81 82 83 84 85 86 87 88 89 90 91 92 93 94 95 96 97 98 99 100

19

2 2 3 2 4 2

④

22

4 2 3 0

27

*solare*

3 3 4 1 4 3 0 0

③

33

ΦIII

*f*

3 2 4 1 2 4 3 1

③

39

2 3 1 4 3

②

*mp*

44

3 4 2

*mf*

48

2 2

*dim.* *a poco a poco*

# Del sol al este, al sol al oeste

Patricio Calatayud

## I. Raiz

$\text{♩} = 60$

*mf*

4

7

10

13

16

Staff 16-19: Treble clef, key of D major. Measures 16-19. Dynamics: *p* (sub) and *f*. A crescendo hairpin spans measures 16-18, and a decrescendo hairpin spans measures 18-19.

20

Staff 20-22: Treble clef, key of D major. Measures 20-22. Dynamics: *mf*. Measure 20 starts with *mf*. Measure 21 has a triplet of eighth notes. Measure 22 has a triplet of eighth notes.

23

Staff 23-25: Treble clef, key of D major. Measures 23-25. Measure 23 has a triplet of eighth notes. Measure 24 has a triplet of eighth notes. Measure 25 has a triplet of eighth notes.

26

Staff 26-28: Treble clef, key of D major. Measures 26-28. Measure 26 has a triplet of eighth notes. Measure 27 has a triplet of eighth notes. Measure 28 has a triplet of eighth notes.

29

Staff 29-31: Treble clef, key of D major. Measures 29-31. Measure 29 has a triplet of eighth notes. Measure 30 has a triplet of eighth notes. Measure 31 has a triplet of eighth notes.

32

Staff 32-34: Treble clef, key of D major. Measures 32-34. Measure 32 has a triplet of eighth notes. Measure 33 has a triplet of eighth notes. Measure 34 has a triplet of eighth notes.

(♩. = 120)

4

*mf*

*p*

*f*

B II

$\frac{1}{2}$  BV

$\frac{1}{2}$  BVIII

B VII

*a tempo*

# Estudio modal II

*Para María con su helado*

Miguel Ordóñez

$\text{♩} = 100$

pizz.

4

son.ord.

*m a m i m a*

*C III*

7

*m a m i m a*

9

11

13

*ff*

*1/2C*

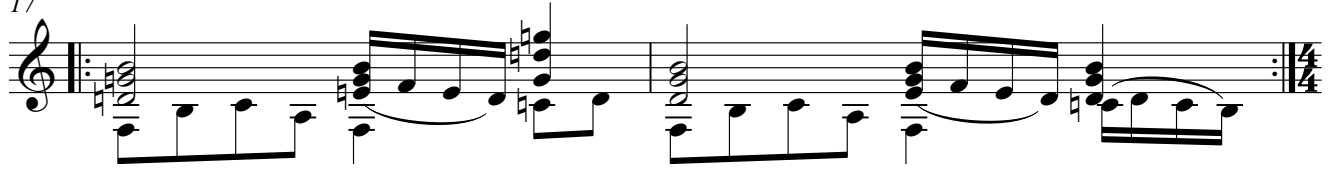
*1/2C*

*1/2C*

15



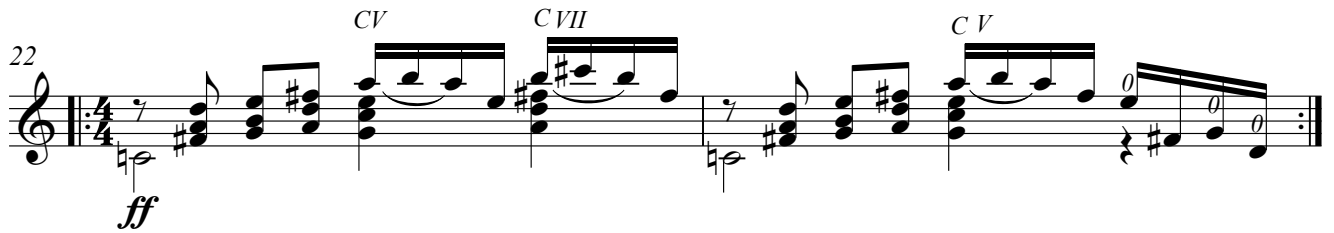
17



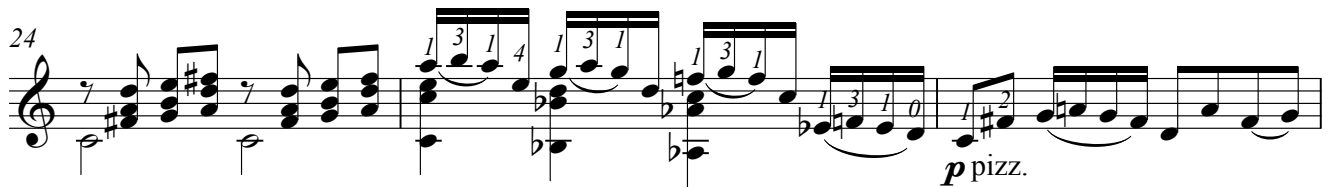
19



22



24



27

